

# WATER MOTOR GONG

## MODEL E



Document includes technical information for : **ASTRA** Water Motor Gong Model E

---

**Venus Fire Protection**

4105 Portland blvd. Sherbrooke, Quebec, Canada J1L 1X9

venus-fire.com / sales@venus.ca

t: 1-819-820-8000 / f: 1-819-820-8002

# WATER MOTOR GONG

## MODEL "E"

### LIGHTWEIGHT - EASY TO INSTALL - EFFICIENT

**ASTRA**'s Water Motor Gong is for the Sprinkler Contractor who wants a quality, efficient and dependable water-alarm. It is lightweight, rugged and easy to install. It's design is the result of many requests from sprinkler contractors for the type of Water Motor Gong that they felt would answer their needs.



### DESCRIPTION

The **ASTRA** model "E" Water Motor Gong is a self contained, water operated alarm which sounds continuously whenever the sprinkler system is activated. Designed with functional simplicity and sound engineering practice, the **ASTRA** model "E" Water Motor Gong is always ready to function in the event of fire.

### INSTALLATION

1. Cut a hole in the wall to accommodate 3/4" pipe.
2. Cut driveshaft housing (item 9) to appropriate length.
3. Attach driveshaft housing to bracket (item 13) without removing bolt (item 14), and position this assembly on outside wall with the driveshaft housing through the wall.
4. Remove the six cover screws (item 6), cover (item 4), cover gasket (item 7), and impeller (item 2) from the impeller housing (item 1).
5. Insert driveshaft (item 8) through the driveshaft housing into engagement with the striker shaft (item 15).
6. Cut driveshaft even with the top flange of bearing (item 3) in the impeller housing.
7. Insert impeller and rotate by hand to assure proper alignment.
8. Attach cover and cover gasket to impeller housing with six cover screws.

### OPERATION

When, in the case of a fire emergency, the sprinkler system is activated, flowing water enters the Water Motor Gong inlet and strikes the impeller. Rotating in a turbine fashion, the impeller transmits its torque to the striker assembly which sounds the alarm. The water, after it impinges on the impeller, flows through the drain outlet in the impeller housing.

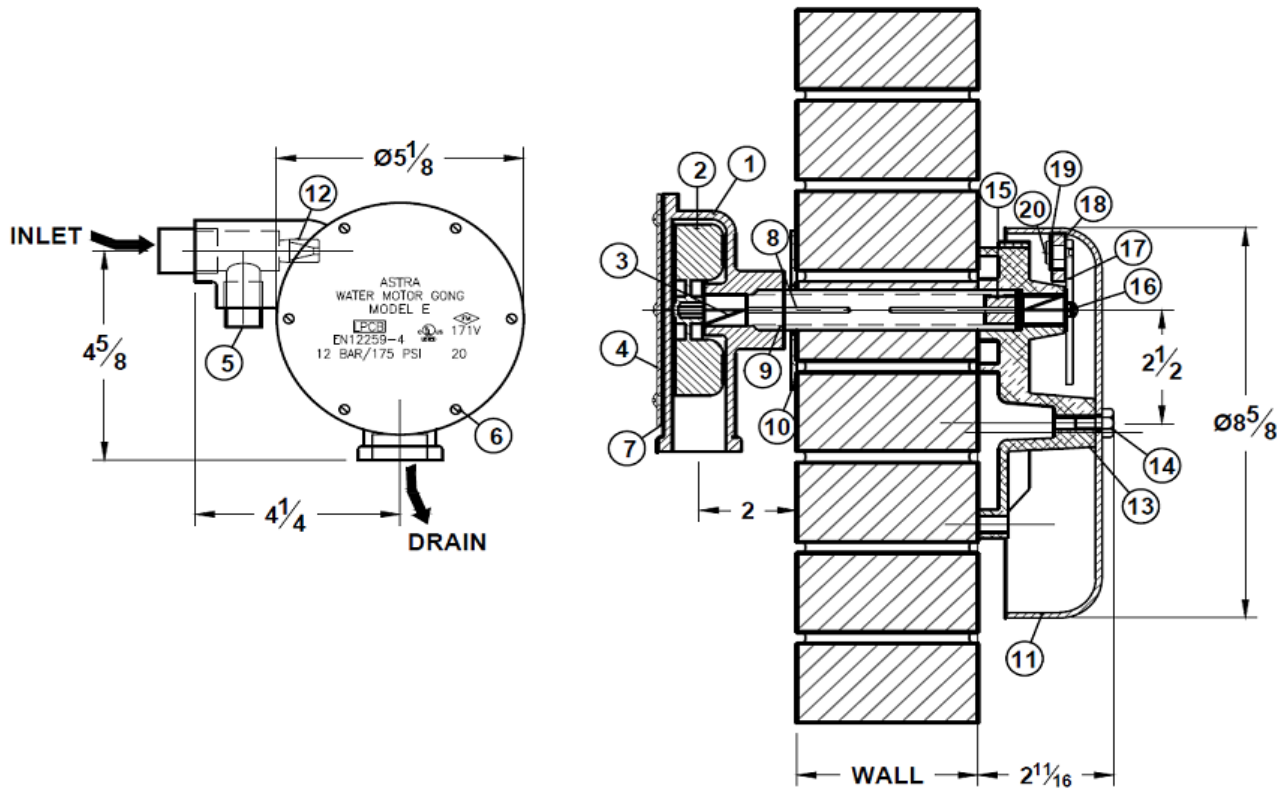
### MAINTENANCE

1. The 3/4" strainer, located at the dry pipe valve or alarm valve in the alarm line, should be periodically cleaned to assure sufficient flow to the Water Motor Gong.
2. The cleanout plug (item 5) should be periodically removed to avoid any accumulation of trash and scale that many have passed through the strainer.
3. The inside of the gong (item 11) should be checked, periodically, for accumulation of foreign material.

### APPROVALS

UL, ULc, FM, LPCB and CE marked

# WATER MOTOR GONG MODEL "E"



### Parts list

ITEM	PART No.	DWG No.	DESCRIPTION
1	501-038	WMG	Impeller housing
2	501-036	WMG	Impeller
3	101-103	WMG	Bearing
4	101-109	WMG	Cover, impeller housing
5	101-207	WMG	Cleanout plug
6	101-115	WMG	Cover screw
7	101-110	WMG	Gasket cover
8	101-107	WMG	Driveshaft
9	101-108		Driveshaft housing (not included)
10	101-304	WMG	Spacer
11	301-046	WMG	Gong
12		WMG	Brass bushing
13	501-037	WMG	Bracket
14	101-117	WMG	Bolt
15	101-104	WMG	Striker shaft
16	101-116	WMG	Striker bracket screw
17	101-100	WMG	Striker bracket
18	101-101	WMG	Striker
19	101-113	WMG	Striker washer
20	101-303	WMG	Shoulder rivet

ADDITIONAL INFORMATION	
Material	Aluminium
Entry	3/4"
Exit	1"
Weight	8 lbs w/strainer
Approvals	UL, cUL, FM, LPCB