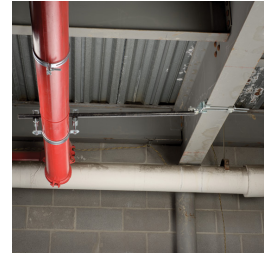
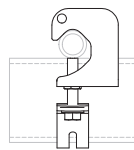
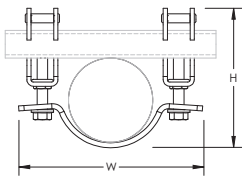


Quick Grip Lateral Sway Brace – CSBQG0250EG



The Quick Grip Lateral Brace, part of the CADDY line of fire sprinkler bracing systems from Pentair, is designed to help simplify installations when bracing service pipe for seismic or other catastrophic events. It features an innovative design for quick attachment of brace pipe to service pipe saving time and money.

- Easy two-step installation eliminates extra trips between structure and service pipe
- Works with 1" and 1 1/4" (25 mm and 32 mm) brace pipes to reduce inventory
- Yellow tips provide a visual indicator that the bolts have been properly torqued
- Easy installation with an impact wrench from the bottom side of the clamp
- Meets NFPA®-13 requirements for seismic sway bracing



Part Number	CSBQG0250EG
Material	Steel
Finish	Electrogalvanized
Pipe Size	2 1/2"
Height (H)	5 7/16" – 5 7/8"
Width (W)	6 3/4"
Certifications	cULus FM OSHDP
Standard Packaging Quantity	10 pc
UPC	78285671294
EAN-13	8711893138733



UL Loads			
Part Number	Service Pipe Schedule	Lateral	
		1" Brace Pipe	1 1/4" Brace Pipe
CSBQG0250EG	Dyna-Flow®	2,015 lb	2,015 lb
	10	2,015 lb	2,015 lb
	40	2,015 lb	2,015 lb
CSBQG0300EG	Dyna-Flow®	2,015 lb	2,015 lb
	10	2,015 lb	2,015 lb
	40	2,015 lb	2,015 lb
CSBQG0400EG	Dyna-Flow®	2,015 lb	2,015 lb
	10	2,015 lb	2,015 lb
	40	2,015 lb	2,015 lb
CSBQG0600EG	Mega-Flow	2,015 lb	2,015 lb
	10	2,015 lb	2,015 lb
	40	2,015 lb	2,015 lb
CSBQG0800EG	10	2,015 lb	2,015 lb
	40	2,015 lb	2,015 lb

FM Loads					
Part Number	Service Pipe Schedule	Lateral			
		Horizontal Capacity per Installation Angle from Vertical			
		30° - 44°	45° - 59°	60° - 74°	75° - 90°
CSBQG0250EG	Lightwall	1,410 lb	2,000 lb	2,450 lb	2,740 lb
	10	1,410 lb	2,000 lb	2,450 lb	2,740 lb
	40	1,410 lb	2,000 lb	2,450 lb	2,740 lb
CSBQG0300EG	Lightwall	1,190 lb	1,680 lb	2,060 lb	2,300 lb
	10	1,190 lb	1,680 lb	2,060 lb	2,300 lb
	40	1,190 lb	1,680 lb	2,060 lb	2,300 lb
CSBQG0400EG	Lightwall	1,190 lb	1,680 lb	2,060 lb	2,300 lb
	10	1,190 lb	1,680 lb	2,060 lb	2,300 lb
	40	1,190 lb	1,680 lb	2,060 lb	2,300 lb
CSBQG0600EG	Lightwall	870 lb	1,230 lb	1,510 lb	1,690 lb
	10	870 lb	1,230 lb	1,510 lb	1,690 lb
	40	970 lb	1,370 lb	1,680 lb	1,870 lb
CSBQG0800EG	0.188" (Wall Thickness)	790 lb	1,110 lb	1,360 lb	1,520 lb
	40	790 lb	1,110 lb	1,360 lb	1,520 lb

Dyna-Flow is a registered trademark of Allied Tube & Conduit Corporation. FM is a registered certification mark of FM Approvals LLC, LTD. NFPA is a registered trademark of National Fire Protection Association, Inc. UL, UR, cUL, cUR, cULus and cURus are registered certification marks of UL LLC.

WARNING

Pentair products shall be installed and used only as indicated in Pentair's product instruction sheets and training materials. Instruction sheets are available at erico.pentair.com and from your Pentair customer service representative. Improper installation, misuse, misapplication or other failure to completely follow Pentair's instructions and warnings may cause product malfunction, property damage, serious bodily injury and death and/or void your warranty.

© 2018 Pentair All rights reserved

Pentair, CADDY, CADWELD, CRITEC, ERICO, ERIFLEX, ERITECH and LENTON are owned by Pentair or its global affiliates.

All other trademarks are the property of their respective owners. Pentair reserves the right to change specifications without prior notice.

